



MidWest Equipment Inc.

Door Model: _____

Date: / / _____

Sold to: _____ Contact: _____

Project: _____

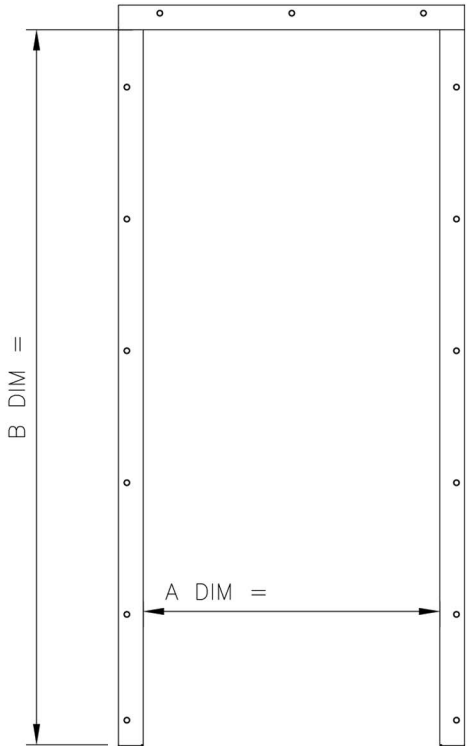
Additional information: _____

© 2019 MidWest

www.MWEquip.com

info@mwequip.com

1-877-508-7586



2" LEG LENGTH

1/4 ϕ HOLES
PREDRILLED FOR
FASTENING TO WALL

ANCHOR FLOOR
PLATES

3/16" BACK UP PLATE
FOR HARDWARE

SPECIFICATIONS:

- WALL THICKNESS:
- WALL TYPE:
- FINISHED OPENING SIZE:

TO CALCULATE A ROUGH OPENING:

FINISHED WIDTH & ADD 1 1/4" =
 FINISHED HEIGHT & ADD 5/8" =

MATERIAL TYPE

- 12 GA. PRIMED MILD STEEL (STANDARD)
- 12 GA. GALVANIZED (OPTIONAL)
- 12 GA. 304-2B FINISH STAINLESS STEEL (OPTIONAL)

UNIT(S) REQUIRED:

ALL HOLES ARE PRE-DRILLED IN FRAME FOR QUICK AND EASY INSTALLATION.

DIMENSION "A" =

DIMENSION "B" =

DOOR MODEL #

MISC. NOTES: